

The VMware View system is a way for students and faculty to access licensed software remotely or locally. This system uses a locally installed client that is accessible from view.mst.edu

VMware View creates a remote desktop session with virtual Windows machines. These can be configured for a variety of purposes to enable access to specialty software normally accessible only within a CLC on campus.

IMPORTANT:

- In order to use VMware View Client on a Mac, you **MUST** have the Windows Remote Desktop Client also installed. The Remote Desktop Client is available for free from Microsoft:

<http://www.microsoft.com/mac/remote-desktop-client>

- If you want to use the VMware View Client from an off-campus location, you must also have Virtual Private Networking (VPN) enabled on your Mac. Instructions for setting up VPN on a Mac are available at:

<http://it.mst.edu/services/virtual-private-network/virtual-private-network-tutorials/#Mac>

DOWNLOAD VMWARE VIEW CLIENT

1. Navigate to <http://view.mst.edu>.
2. Click **View Client for Mac OS**.



You must use View Client for Mac OS to access this Connection Server.

To connect, start the View Client and enter *view.mst.edu* as the server address.

If the Client is not installed, you may download it from the link below.

Contact your local Administrator if you have any questions.

[View Client for Mac OS](#)

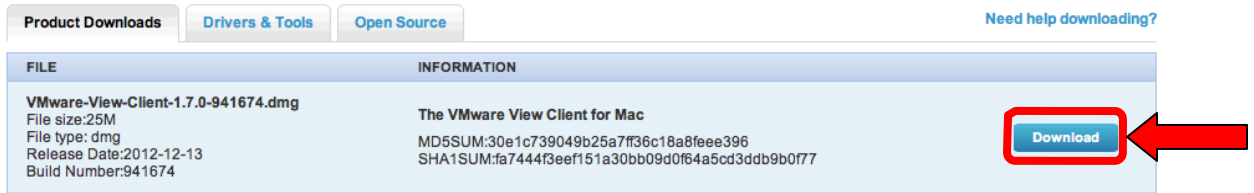


3. You will be taken to the main VMWare download web site. Click the **View Download** button under the section for “VMware View Client for Mac”.

| VMware View Client for Mac | | | |
|----------------------------|-------|------------|-------------------------------|
| VMware View Client for Mac | 1.7.0 | 2012-12-13 | View Download |



4. Click **Download** and save the View Client installer to a convenient location on your local machine.

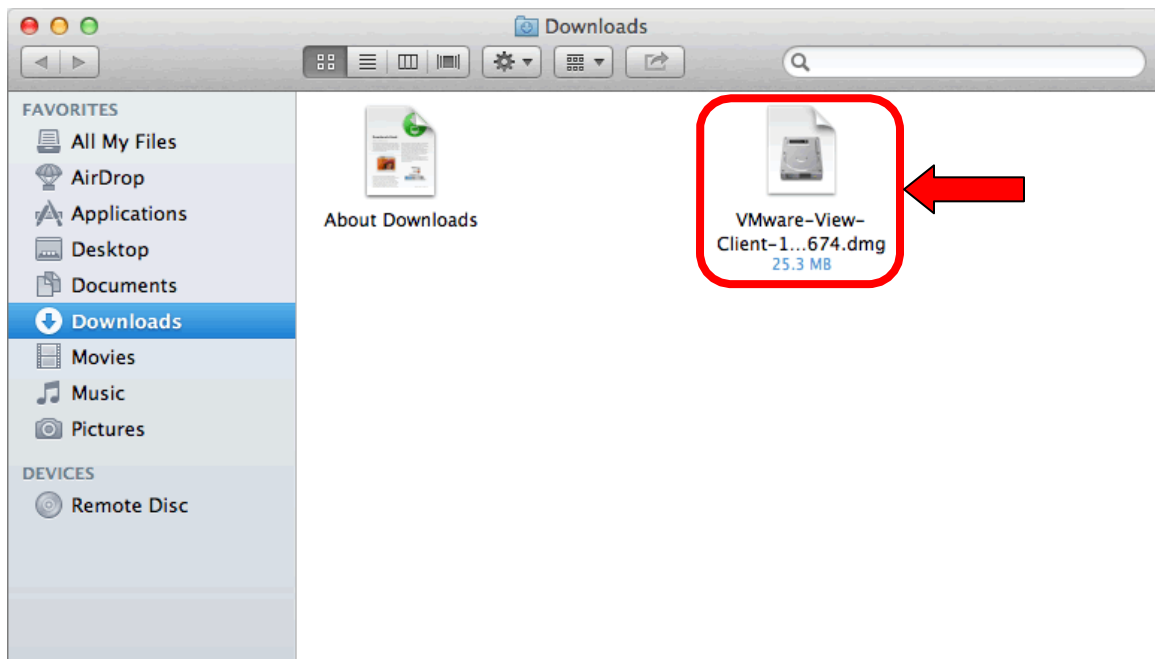


INSTALL VMWARE VIEW CLIENT

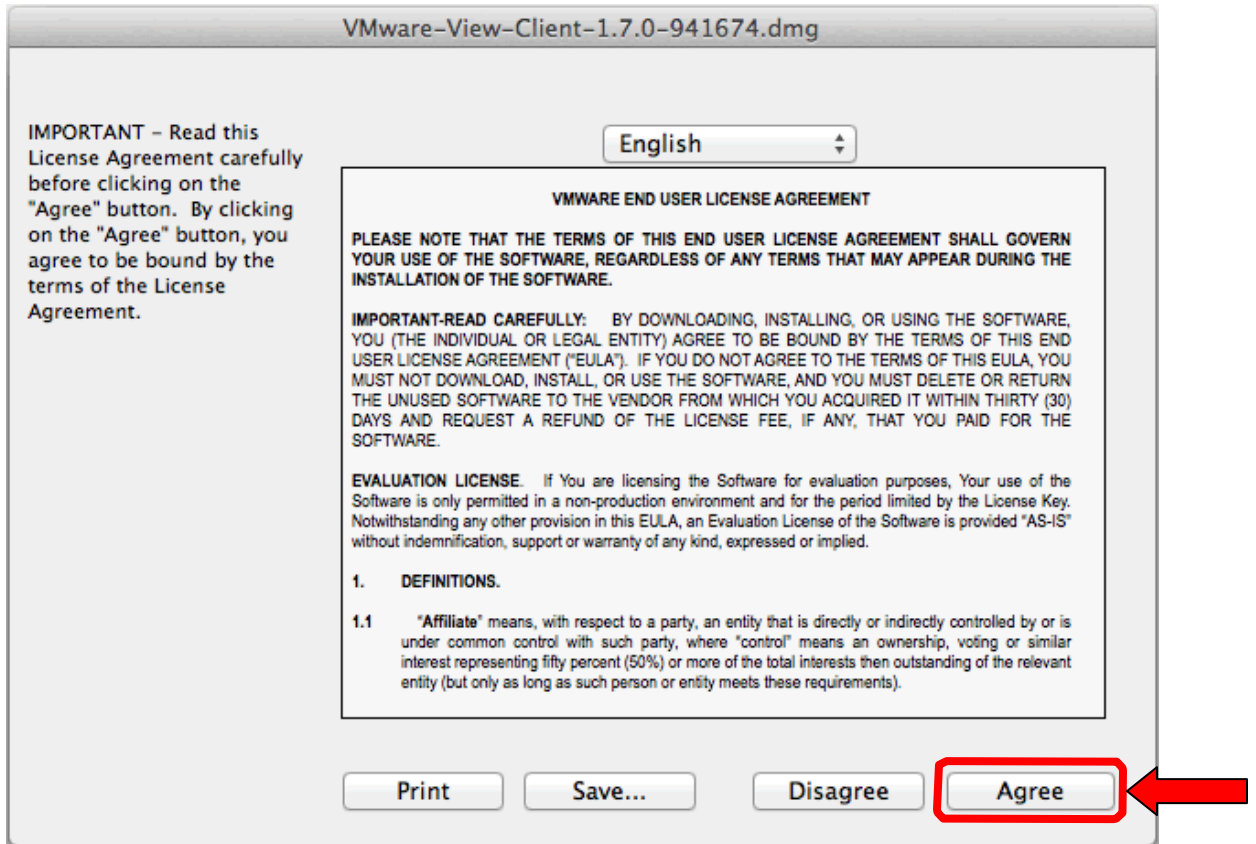
Once the client is downloaded, run the installer.

NOTE: If you have an older version of the client you will need to UNINSTALL the older version, and then install the newer version.

1. Double-click the installation file.



2. Click **Agree**.



3. Click-and-drag the VMware View Client icon on the left over to the **Applications** folder on the right.



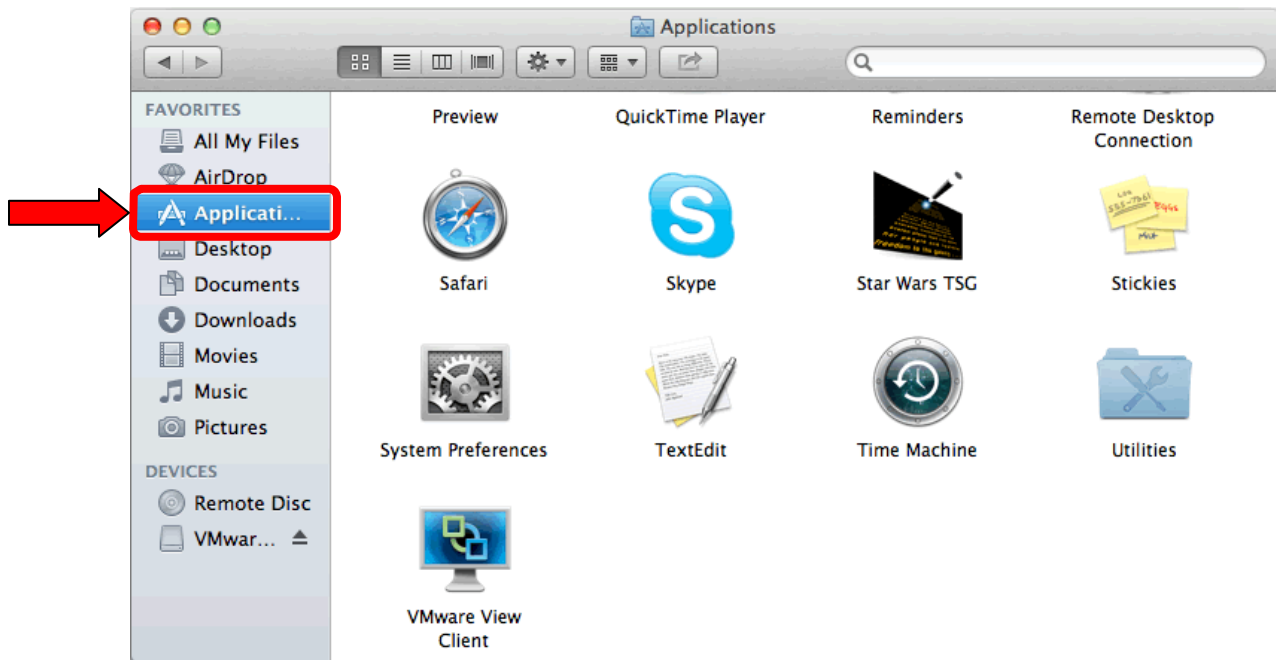
CONFIGURE AND CONNECT TO VMWARE VIEW CLIENT

Before the VMware View Client can be used on a Mac, it must first be configured to run on Missouri S&T servers.

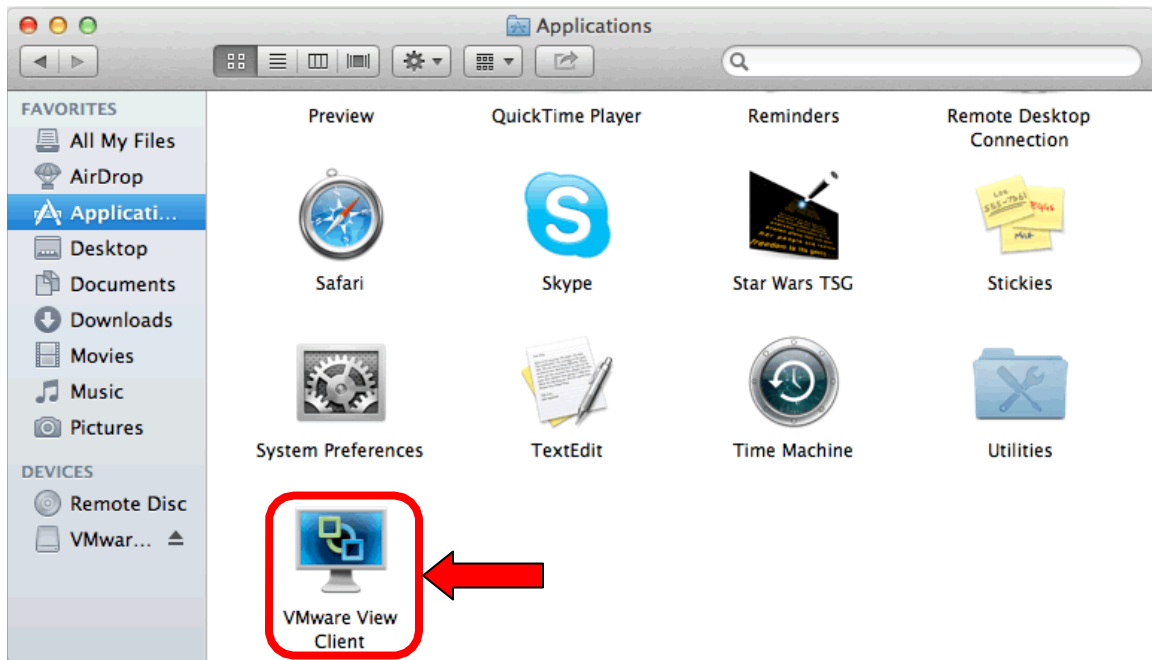
1. Click the **Finder** icon in the dock.



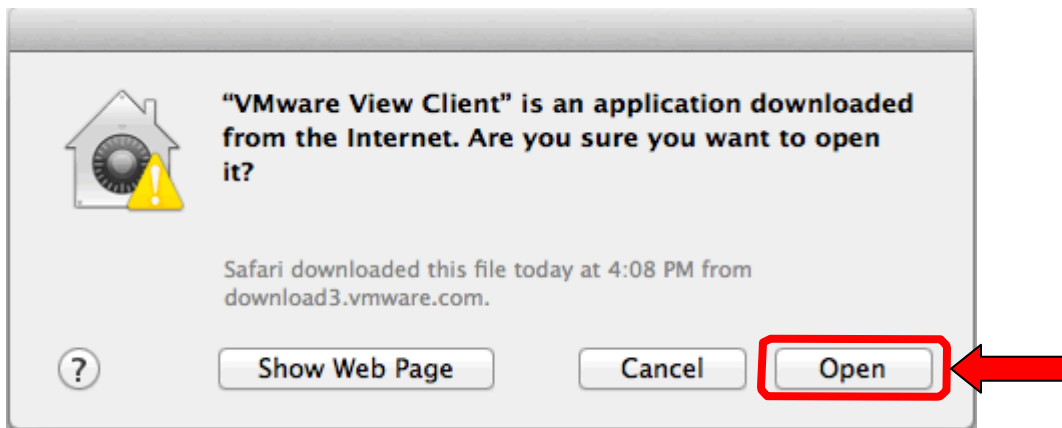
2. Click **Applications**.



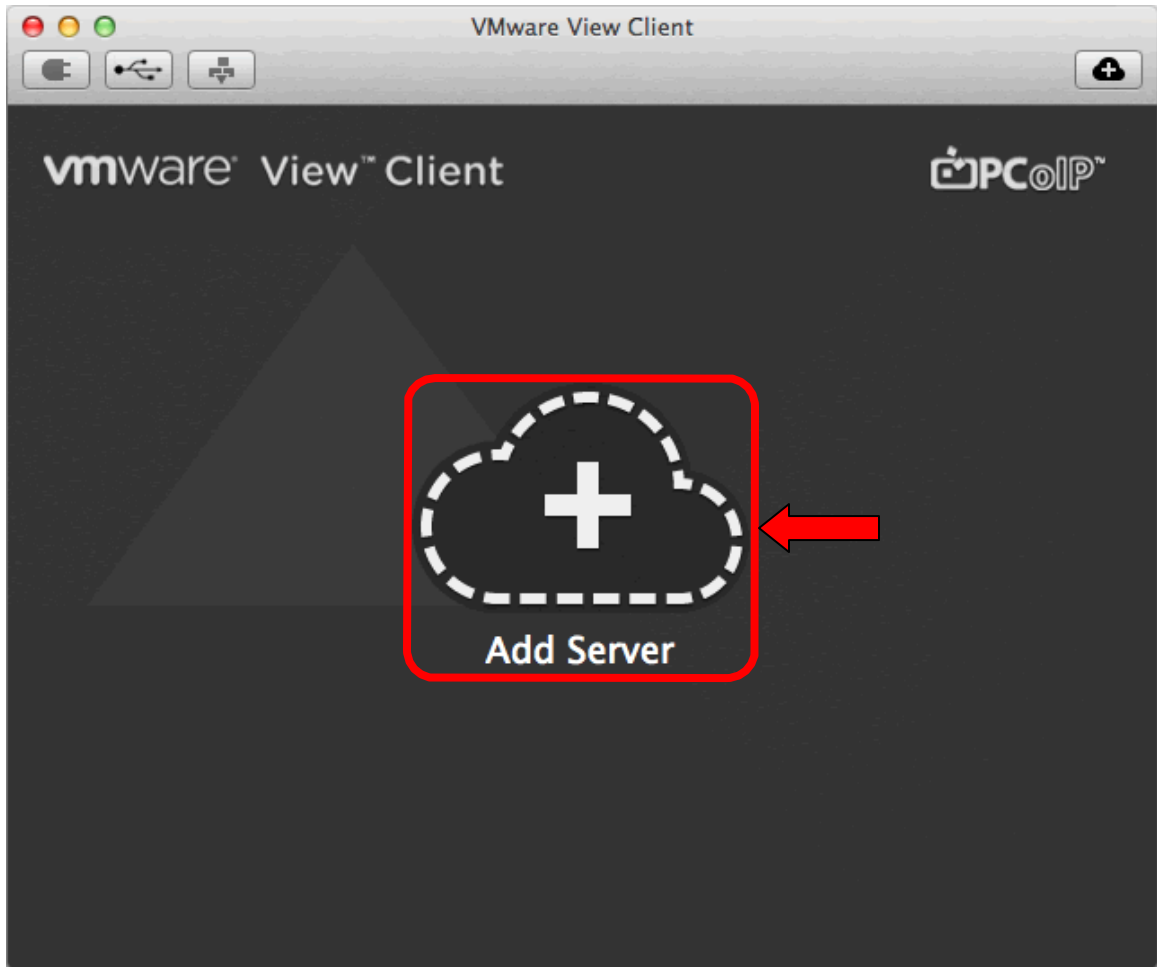
3. Double-click **VMware View Client**. This adds the client to the dock at the bottom of the screen. **NOTE:** If you will be using the VMware View Client on a regular basis, you may want to click and drag the icon to the dock so it stays there.



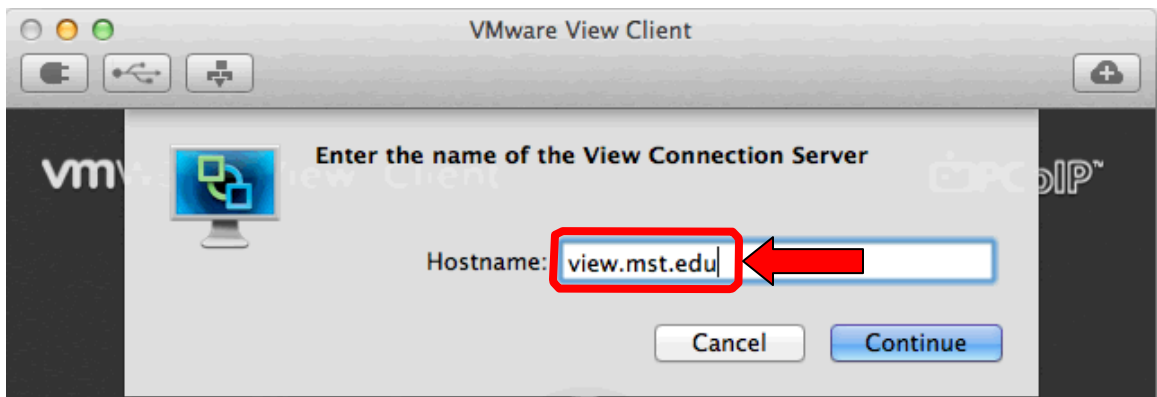
4. Click **Open** to confirm opening the VMware View Client. This dialog box may or may not appear when you open VMware View Client based on your system's security settings.



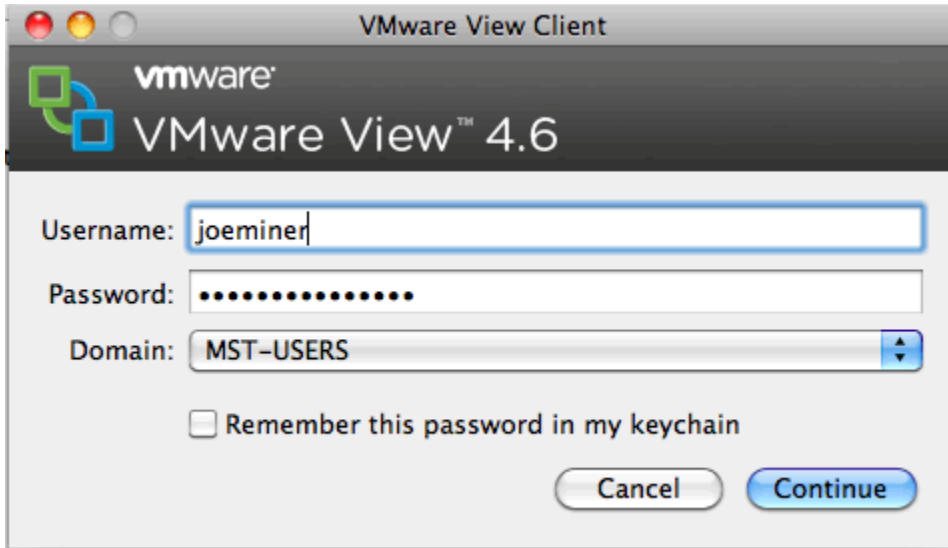
5. Click **Add Server**.



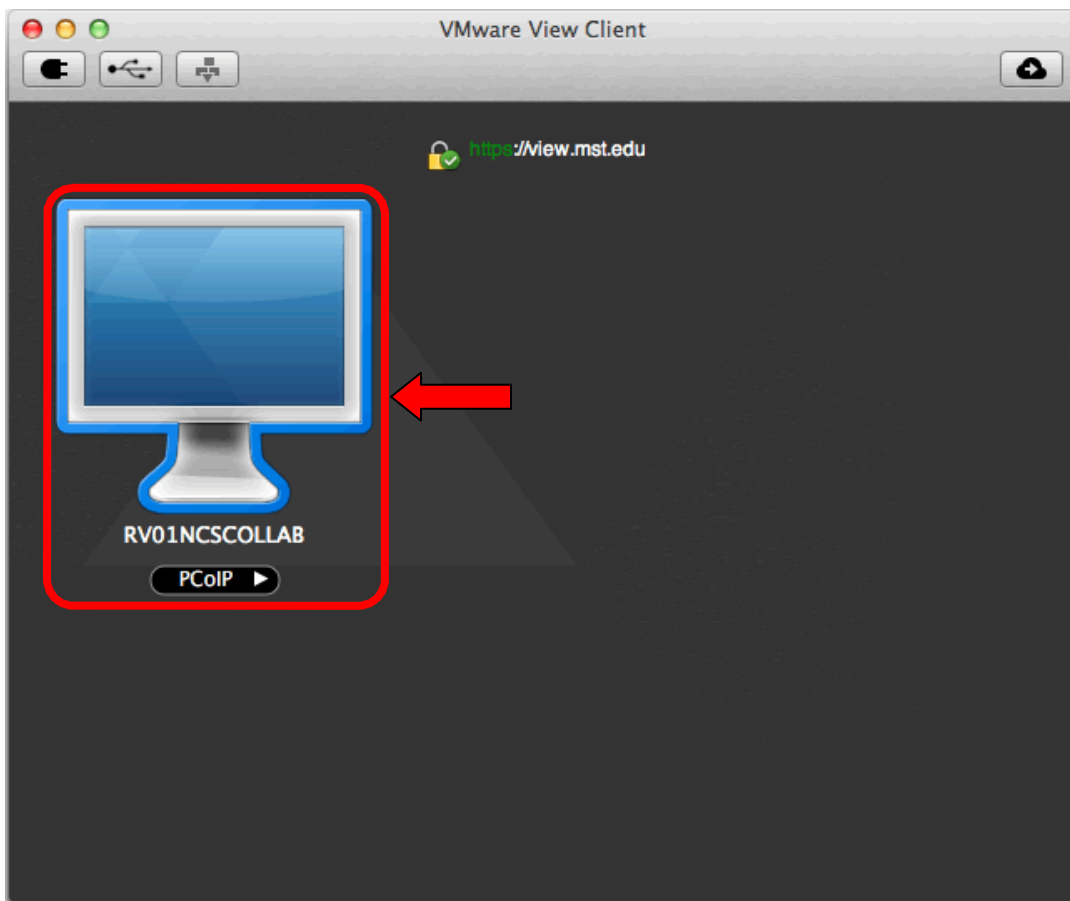
6. Type *view.mst.edu* for the Hostname.



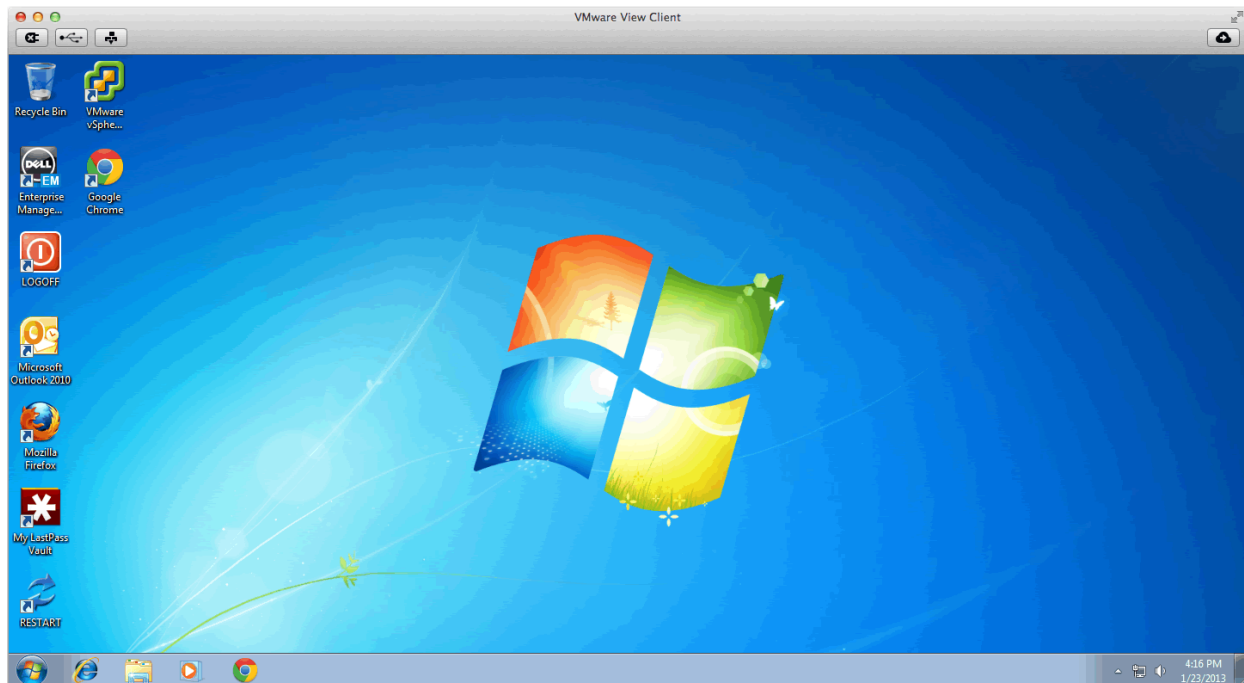
7. Type in your S&T userid and password and select **MST-USERS** from the Domain drop-down list.



8. Click **Continue**.
9. Double-click the pool of machines that are enabled for you. **NOTE:** The pools of machines available will depend on the classes in which you are enrolled.



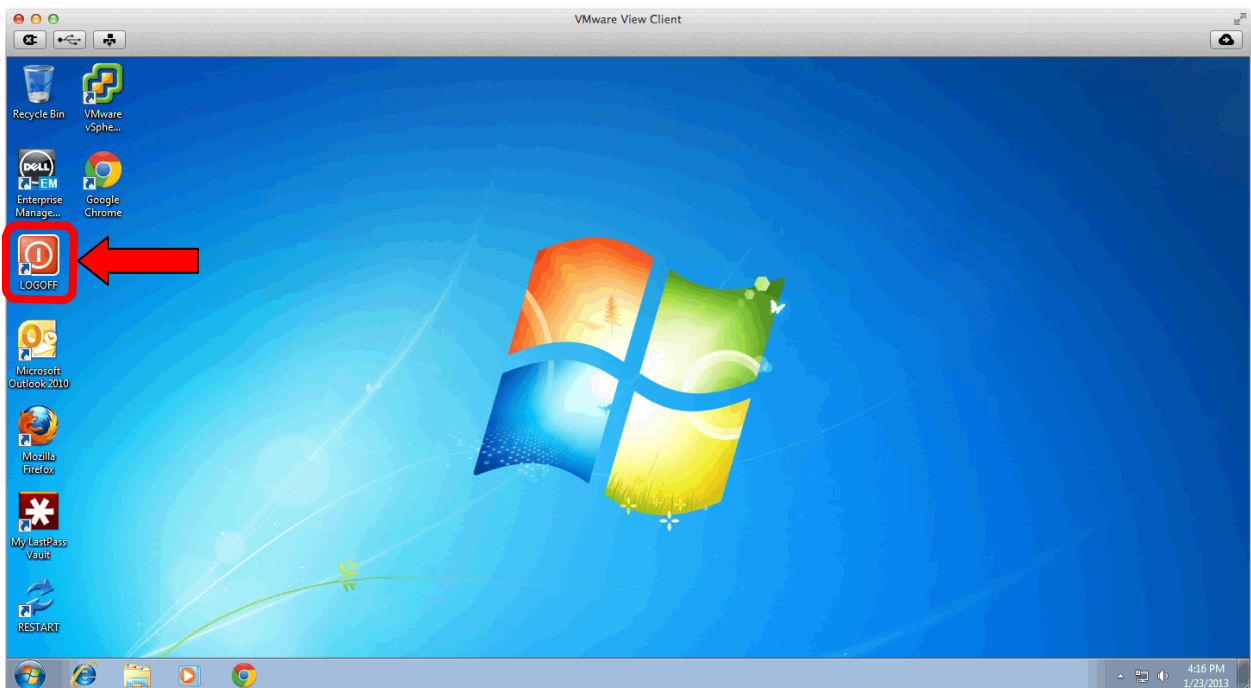
At this point, you are connected to a virtual Windows machine from a Mac.



DISCONNECTING FROM A VIRTUAL MACHINE

To disconnect from a VMware machine, follow this step:

1. Double-click the **LOGOFF** icon on the virtual desktop. This will log you off the machine and disconnect you from the virtual server.



TROUBLESHOOTING

WARNING: You **MUST** use a VPN connection if you are connecting from off campus!
You can find more information about how to do this necessary step here:
<https://it.mst.edu/services/virtual-private-network/virtual-private-network-tutorials/>

If you experience unwanted behavior or errors please report them to the Help Desk:

(573) 341-HELP (4357) or online at <http://help.mst.edu>

with the following information:

- Your name and userid. **IMPORTANT:** Do NOT share your password with anyone. IT will NEVER ask a user for a password.
- A detailed description of the issue you are having (complete text of error if possible) and or the nature of the issue you are having.
- What OS you are using (Windows XP, Vista, 7, Mac, Linux etc.).
- The version and build of the View client you are using:
 - Connect to the VMware pool of machines.
 - Click **VMware View Client** in the top menu bar.
 - Click **About VMware View Client**.
- The time the error occurred. This will help us see if the system logged an error so be as precise as possible.

Questions, concerns and feedback (not related to a support case) can be sent to edtech@mst.edu.